

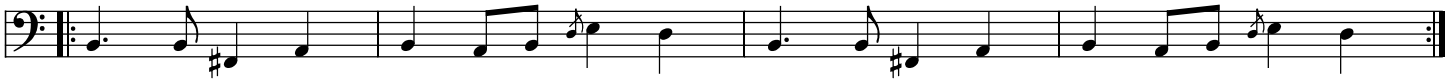
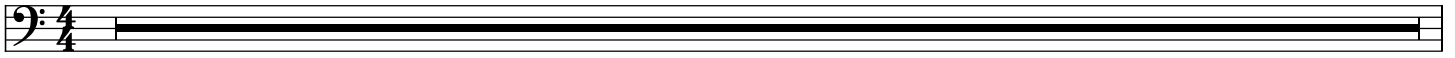
Pretty Fly - Bass

The Offspring

♩ = 142

Intro

8



Vers



Chorus



Vers



Chorus



Bridge

The Bridge section consists of two staves of music in bass clef. The first staff contains four measures: the first three measures each begin with a whole rest followed by a quarter note, and the fourth measure contains a quarter note followed by two eighth notes. The second staff also contains four measures: the first three measures are identical to the first staff, and the fourth measure contains a quarter note followed by an eighth note with a sharp sign, then another eighth note, and finally a quarter note.

Intro

The Intro section consists of a single staff of music in bass clef. It begins with a double bar line and a repeat sign. The first measure contains a quarter note with a sharp sign, followed by a quarter note. The second measure contains a quarter note, an eighth note with a sharp sign, and a quarter note. The third measure contains a quarter note with a sharp sign, followed by a quarter note. The fourth measure contains a quarter note, an eighth note with a sharp sign, and a quarter note. The section ends with a double bar line and a repeat sign.

Chorus

The Chorus section consists of five staves of music in bass clef. The first three staves are identical and feature a rhythmic pattern of eighth notes and quarter notes with various accidentals. The fourth and fifth staves provide a harmonic accompaniment with a different rhythmic pattern, primarily using quarter notes and eighth notes.